

**(DANRE) hbae1 Antibody (Center)**  
**Purified Rabbit Polyclonal Antibody (Pab)**  
**Catalog # AP21112a**

**Specification**

---

**(DANRE) hbae1 Antibody (Center) - Product Information**

Application	WB,E
Primary Accession	<a href="#">Q7ZT21</a>
Reactivity	Zebrafish
Host	Rabbit
Clonality	Polyclonal
Isotype	Rabbit IgG
Calculated MW	15588
Antigen Region	46-80

**(DANRE) hbae1 Antibody (Center) - Additional Information**

**Gene ID** 30597

**Target/Specificity**

This DANRE hbae1 antibody is generated from a rabbit immunized with a KLH conjugated synthetic peptide between 46-80 amino acids from the Central region of DANRE hbae1.

**Dilution**

WB~~1:1000

E~~Use at an assay dependent concentration.

**Format**

Purified polyclonal antibody supplied in PBS with 0.09% (W/V) sodium azide. This antibody is purified through a protein A column, followed by peptide affinity purification.

**Storage**

Maintain refrigerated at 2-8°C for up to 2 weeks. For long term storage store at -20°C in small aliquots to prevent freeze-thaw cycles.

**Precautions**

(DANRE) hbae1 Antibody (Center) is for research use only and not for use in diagnostic or therapeutic procedures.

**(DANRE) hbae1 Antibody (Center) - Protein Information**

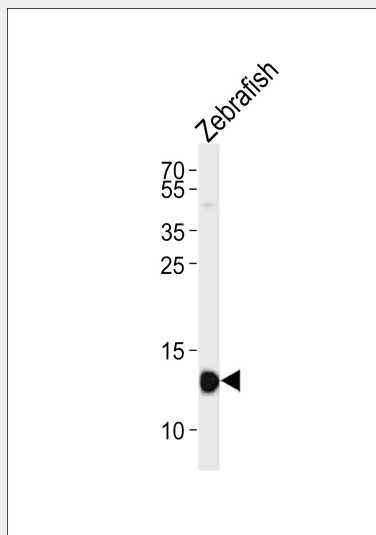
**Name** Q7ZT21

**(DANRE) hbae1 Antibody (Center) - Protocols**

Provided below are standard protocols that you may find useful for product applications.

- [Western Blot](#)
- [Blocking Peptides](#)
- [Dot Blot](#)
- [Immunohistochemistry](#)
- [Immunofluorescence](#)
- [Immunoprecipitation](#)
- [Flow Cytometry](#)
- [Cell Culture](#)

#### **(DANRE) hbae1 Antibody (Center) - Images**



Western blot analysis of lysate from Zebrafish tissue lysate, using (DANRE) hbae1 Antibody (Center)(Cat. #AP21112a). AP21112a was diluted at 1:1000. A goat anti-rabbit IgG H&L(HRP) at 1:10000 dilution was used as the secondary antibody. Lysate at 20ug.